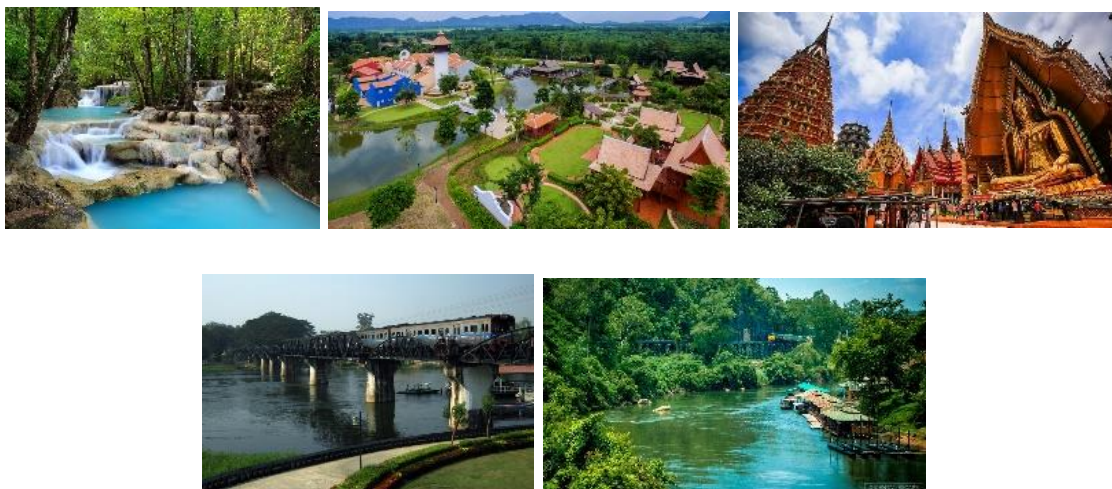


## 2 DAYS KANCHANABURI

Valid Till 30 Apr 2020 ( Except 20 Dec 2019 TO 15 Jan 2020)



**Day 1 : Kanchanaburi (L/D)**  
 Arrival at Bangkok Airport or Bangkok Hotel meet and greet and transfer to Kanchanaburi  
 Visit Wat Thum Sua The temple is built in a mixed, splendid Thai-Chinese style and enshrines a huge Buddha image. Visible from far away, the temple features an impressive Buddha statue and chedi on the top of a hill.  
 Lunch at Local Restaurant Visit historical sites in Kanchanaburi including the Bridge over the River Kwai,  
 Visit Malika R.E.124 The Siamese Living Heritage Town This Business aims to create model town in the period of King Rama V of Chakri Dynasty (around year 1850-1900). Dinner at Local Restaurant  
 Overnight at Hotel in Kanchanaburi

**Day 2 Kanchaburi – Bangkok (B/L/)**  
 Breakfast at Hotel  
 Visit The Death Railway Constructed during World War II, the Thailand to Burma railway is also known as the Death Railway. It is said that one man died for every sleeper that was laid on the track. The line was repaired and restored after the war and still runs passenger services as far as Nam Tok to the north of Kanchanaburi with the most famous section of the line being the Bridge over the River Kwai.  
 Visit Erawan Water fall The most beautiful waterfall in Thailand'  
 Erawan Waterfalls is actually a quite impressive series of 7 waterfalls. It is approximately 2km walk from the bottom of the waterfalls until the top. Lunch at Local Restaurant  
 Transfer bangkok to Bangkok Hotel or Bangkok Airport

Rate in USD / Pax ( Base on Twin / Triple Sharing Basic ) 3 \*

2 Pax	3 – 5 Pax	6 – 8 Pax	9 – 10 Pax	Single Sup
USD 300.00	USD 235.00	USD 180.00	USD 160.00	USD 55.00

Hotel in Kanchanaburi : Tayan Resort or Similar

[Click here to Submit Enquiry](#)

(AKV-06/05/2019)